



How do I find my saved list?

1. Choose one of the following methods to display the **Open** window:

- ◆ Choose **File, Open** from the menu bar
- ◆ Click the **Open a saved search** button on the **Quick Start** menu 
- ◆ Click the **Open Saved Search** button on the toolbar 

2. By default, PR Planner lists will be saved in the following location:

C:\Program Files\M Info\PR Planner

The names of the lists in this folder will be automatically displayed in the **Open** window (remember PR Planner automatically adds the file extension of 'pln' to lists). If you have saved lists in another location, use the drop-down arrow button to the right of the **Look in** input box to locate the relevant folder.

3. Once you have located the list, either click to display its name in the **File Name** input box and click the **Open** button (Figure 1), or double-click the list name.

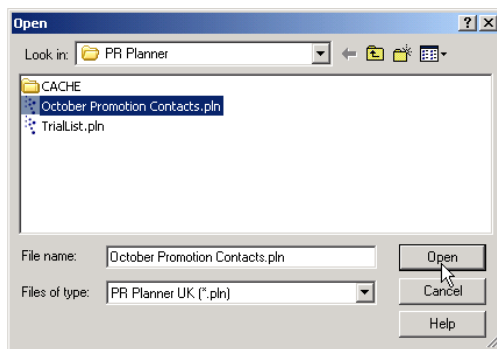


Figure 1